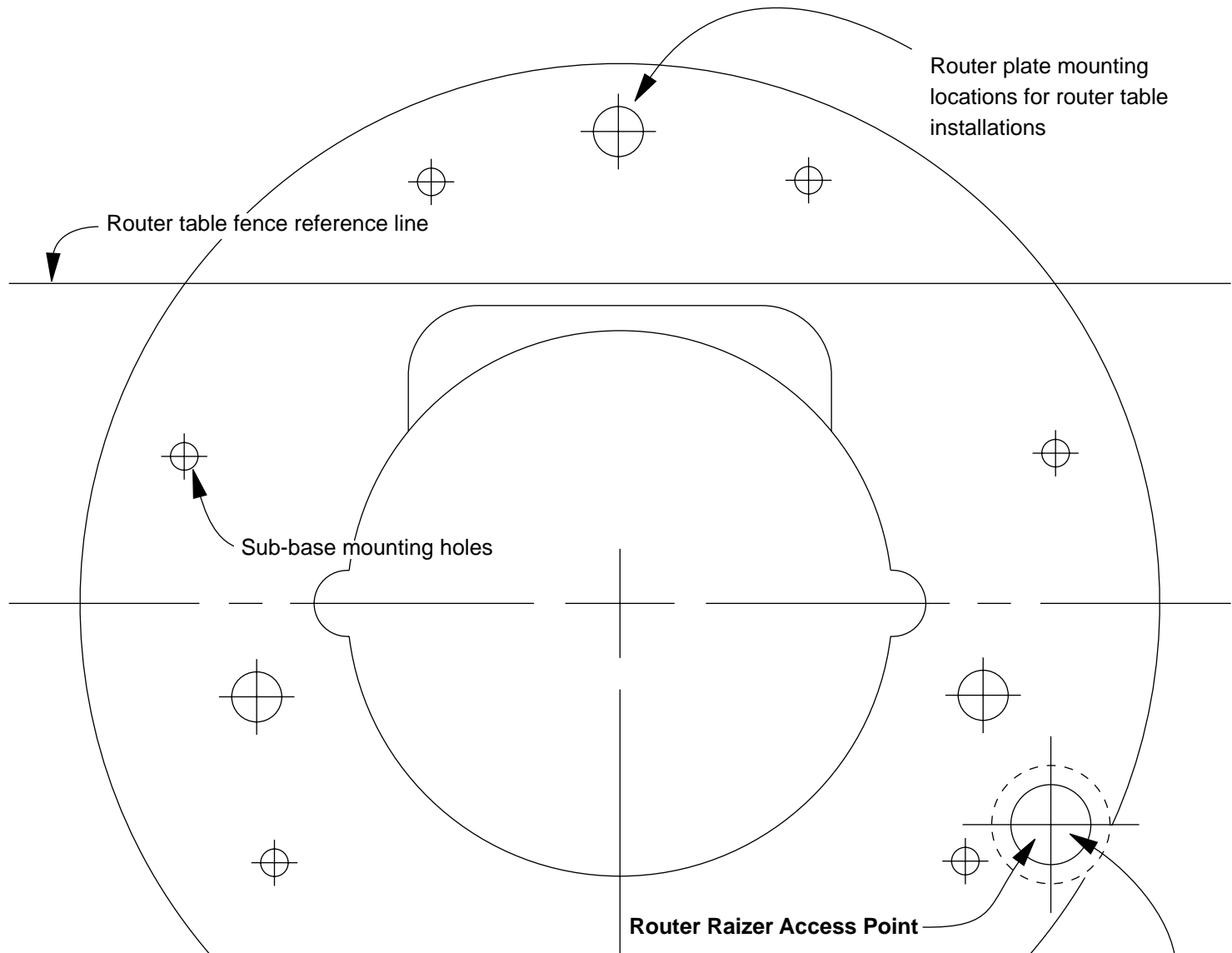


NOTE: This router requires a 3/4" pocket or use of 8" X 8" black rubber gasket for router table installation. Pages 28. 31 & 32



Router Raizer Access Point

3/4" reference circle for drilling the routers original subbase only. Table mounted, drill 1/2" hole in table top.

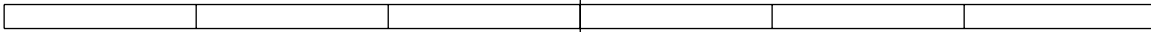
1/2" = .500

.500" reference circle for drilling table top or insert plate.

Drill .500" hole through router table insert plate
 install #30 dust cover insert into .500" hole and press flush with top of insert plate

NOTE: This hole must be drilled 1/2" or .500" for #30 dust cover insert to fit properly.

Use this 6" scale to check accuracy when copied



DeWalt 625 Elu

Note: Cross lines for locating and drilling holes are accurate. The illustration of subbase may vary slightly in size and design, but is accurate enough for cutting the rubber gasket if required.